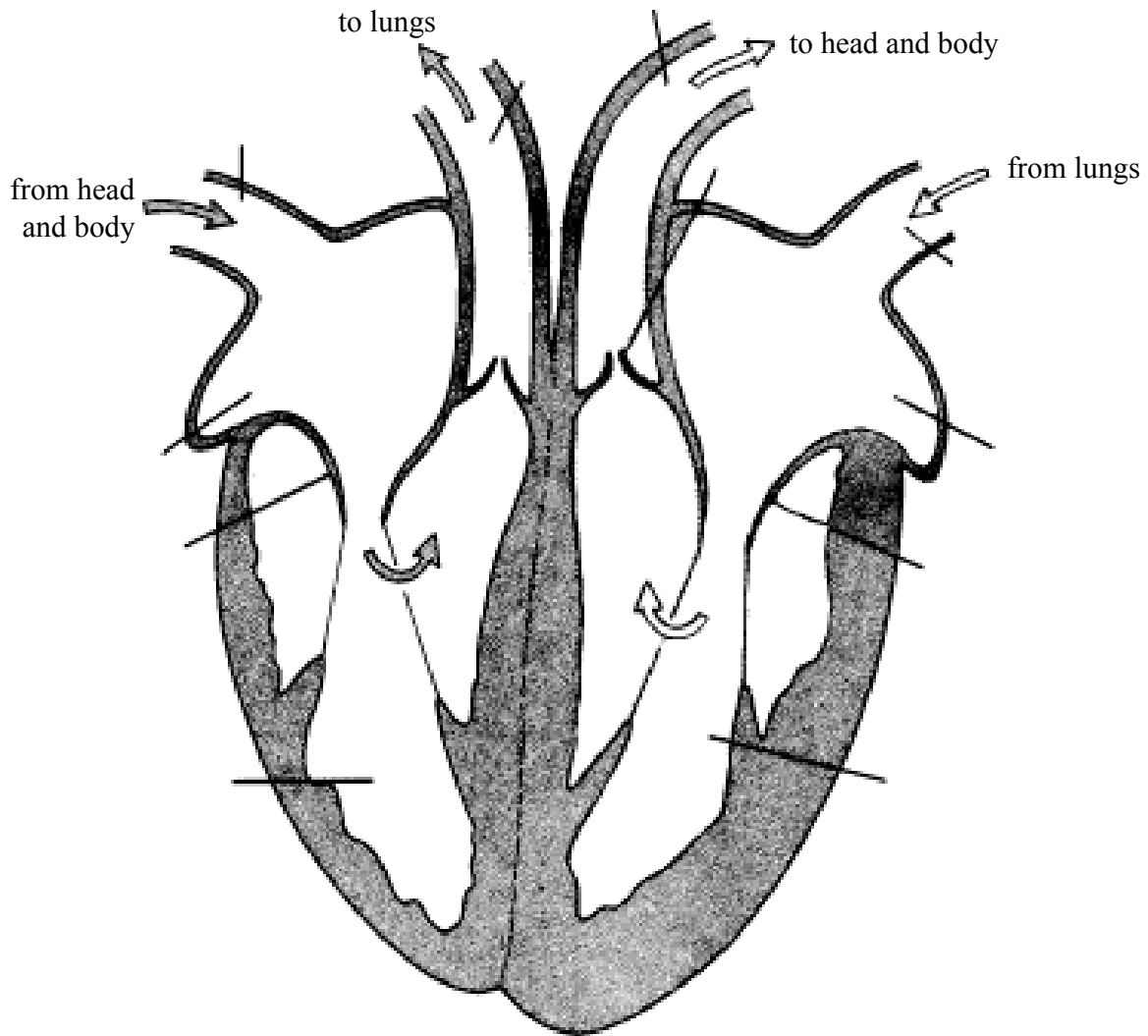


# The Heart



1) Add the following labels to the diagram of a heart:

left atrium, right atrium, left ventricle, right ventricle, valve, aorta, pulmonary artery, pulmonary vein, vena cava.

2) What is the job of the heart?

3) What is the heart made of?

4) Which type of blood vessels does the blood flow TO the heart in?

5) Which type of blood vessels does the blood flow AWAY FROM the heart in?