

# Platform

## We are Platform.

We are an exciting, dynamic scheme offering rail education to schools on behalf of Severnside, Gloucestershire, TransWilts and Worcestershire Community Rail Partnerships.

We are qualified, experienced teachers with a current, working knowledge of classroom requirements, putting us in a perfect position to form a bridge between schools, curriculums, and the rail industry.

**We are passionate about connecting young people to their local railways and communities. We want to empower them to make life choices that are healthy, sustainable, aspirational and ethical.**

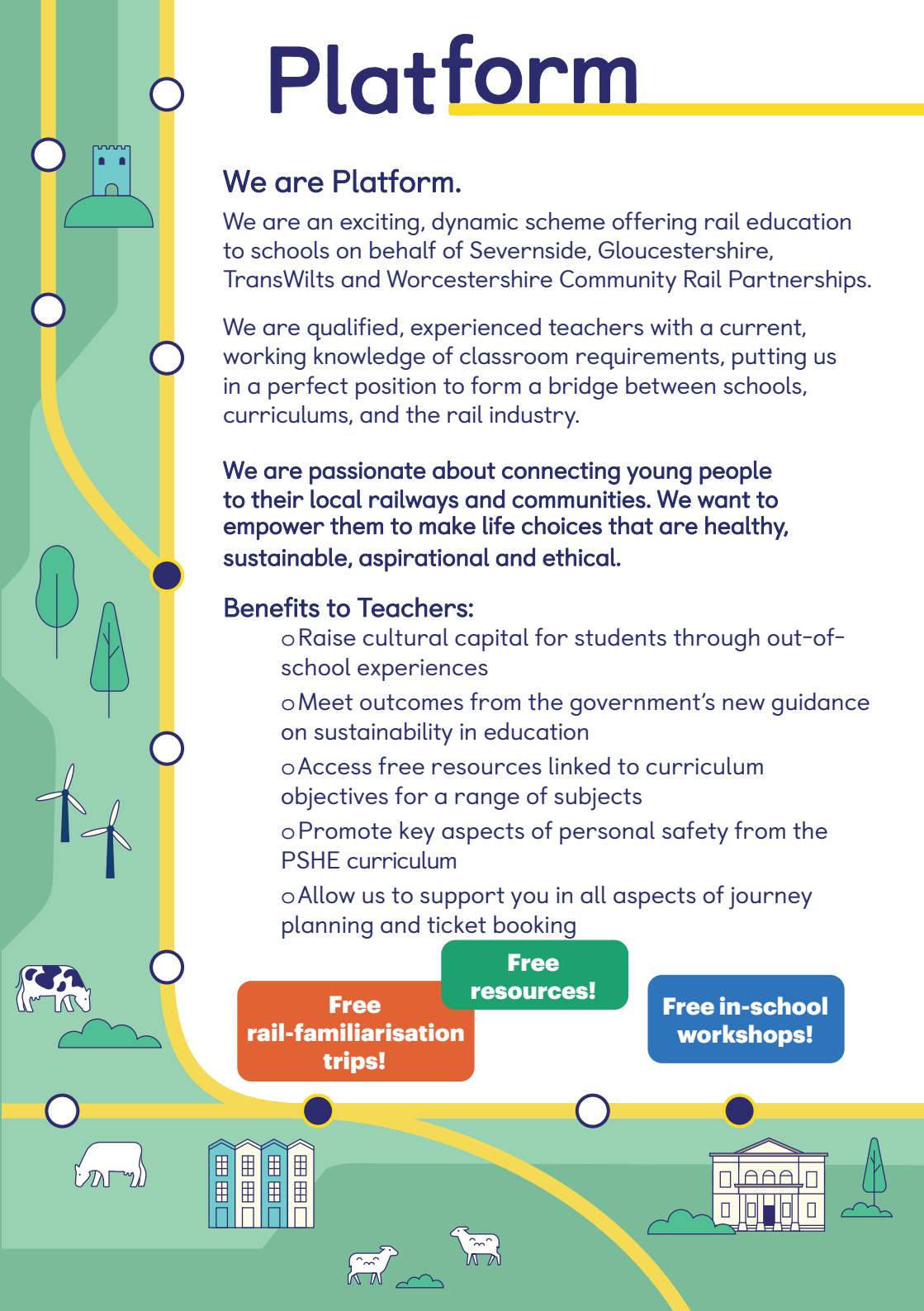
## Benefits to Teachers:

- Raise cultural capital for students through out-of-school experiences
- Meet outcomes from the government's new guidance on sustainability in education
- Access free resources linked to curriculum objectives for a range of subjects
- Promote key aspects of personal safety from the PSHE curriculum
- Allow us to support you in all aspects of journey planning and ticket booking

**Free  
rail-familiarisation  
trips!**

**Free  
resources!**

**Free in-school  
workshops!**



# Platform



## The Platform Website: [platformrail.co.uk](https://platformrail.co.uk), going live April 2022.

Our website provides teachers with clear guidance about how to access our in-person offers. It also holds our free rail-related resources, designed by teachers for teachers.

The lessons are tightly linked to National Curriculum requirements for a range of subjects, making it easier for teachers to engage with rail education without sacrificing curriculum time.

Our website is a central hub for pre-existing rail-related resources and guides and signposts teachers to a range of excellent resources.

### In-School Workshops

Our current offer for workshops is:

1. Rail Safety
2. Sustainable and Healthy Travel
3. Rail Careers

### Rail Familiarisation Visits

We will arrange complimentary travel for classes to take a trip by train to a local area, giving them the opportunity to practice rail safety, confidence, and etiquette in action.

**We are committed to providing a free, meaningful experience for schools. Talk to the team to find out where we can take you on a free visit to benefit your students.**

Want to get in touch before our website is live?  
We're here for you.

Email: [info@raileducation.org.uk](mailto:info@raileducation.org.uk)

Call our Learning Manager, Emilie, on 07464 953914