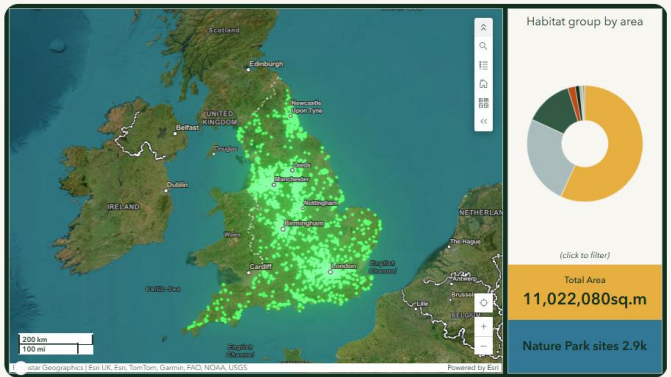


What is the National Education Nature Park?

The National Education Nature Park is a free, fully resourced programme for all nurseries, schools, and colleges in England. It empowers young people to improve their educational site for nature by participating in real scientific research and being involved in decision-making.

It aims to: support the curriculum, promote outdoor learning, upskill educators, improve wellbeing, tackle biodiversity loss, reduce inequalities around green space, and support schools with their [climate action plans](#).



Participating settings are displayed on an interactive map, allowing students to see their site as part of the growing network.

“Grey to Green”

This could be as simple as adding planters, or as transformative as changing an area of tarmac into a pond or orchard. By participating, your learners develop important green skills to act on behalf of nature for their place of education and local community.

“Map your Habitats”

Use our mapping tool to collect environmental data about your school site which will help scientists at the Natural History museum.

[Read about it here.](#)



Register to join

What support is available?

- Regional support: email the South West team- southwestnaturepark@rhs.org.uk
- Local networks: regional teams can direct you to contacts they have built in the region who can offer a variety of support

Free Curriculum Relevant Resources: [Browse resources here.](#)

Filter by key stage

- Select -

- Select -

- Educator Guidance
- All ages
- EYFS
- KS1
- KS2
- KS3
- KS4
- KS5

Filter by Nature Park step

- Select -

- Select -

- All
- Getting to know your space
- Identifying opportunities
- Making decisions
- Making change happen
- Recording change

Filter by subject

Biology

- Select -

EYFS

- Communication and Language
- Literacy
- Personal, Social and Emotional Development
- Physical Development
- Understanding the World
- Expressive Arts and Design
- Mathematics

KS1 - KS4

Art and Design

Biology

- Chemistry
- Citizenship
- Design and Technology
- English
- Geography
- Maths
- Physics
- Science

Led by



With



Working with



Commissioned by



Partners

